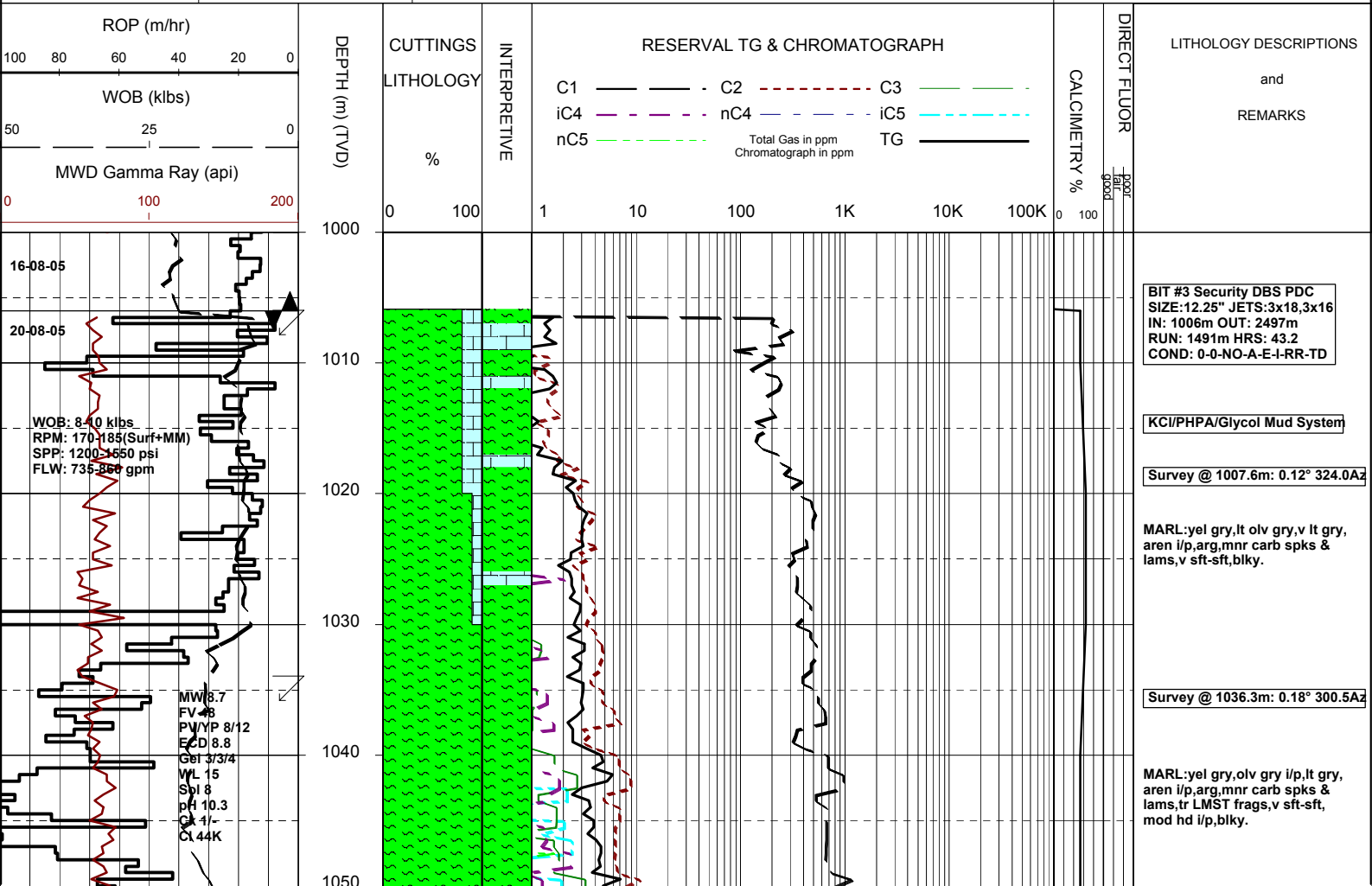
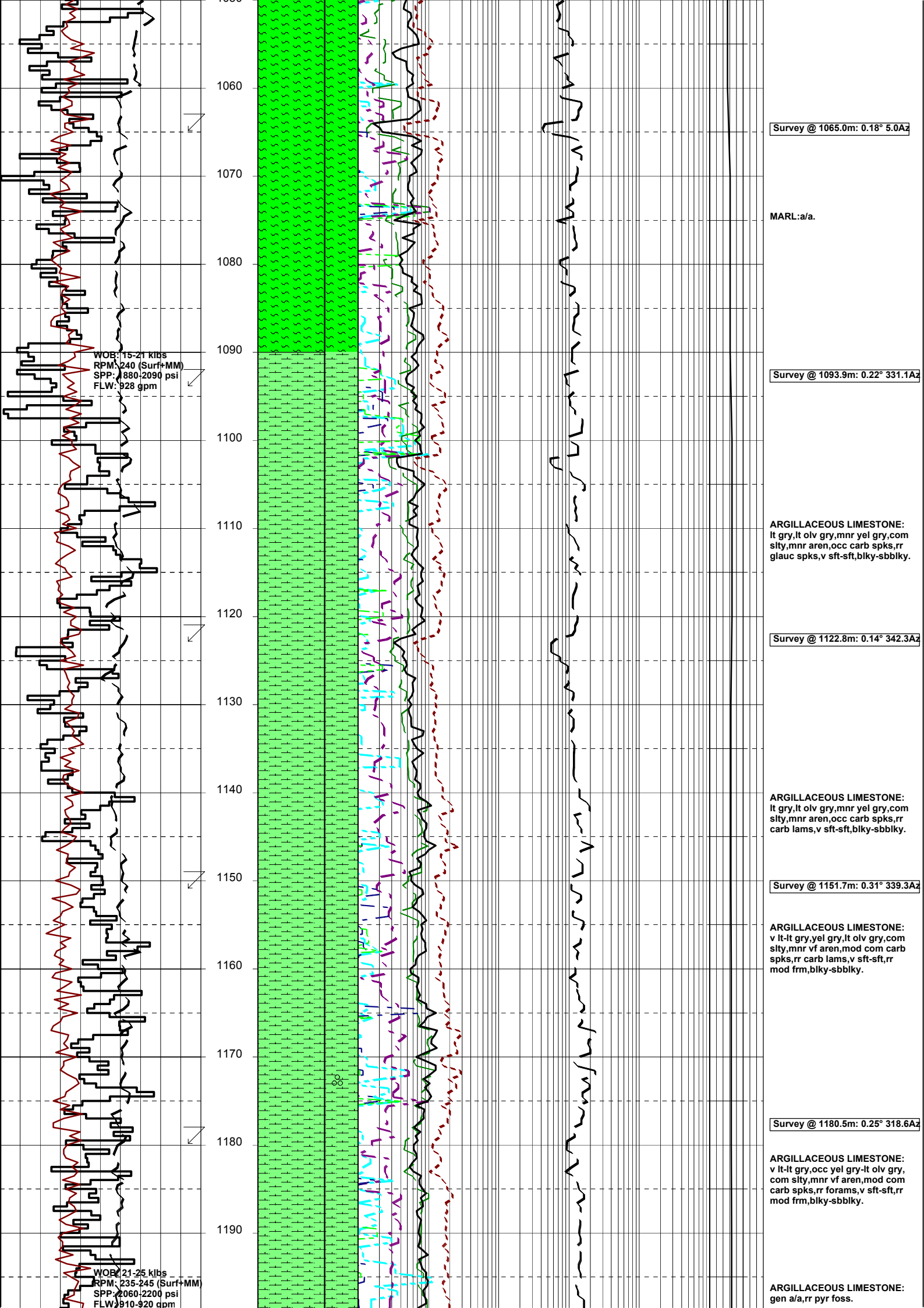


MASTERLOG BASKER 2

GENERAL	POSITION	HOLE / CASING INFO	DATE / DEPTH	ENGINEERS
Country : AUSTRALIA	Latitude : 38°17'58.51"S	17 1/2" Hole to (mMDRT): 1006	Spud Date : 14-08-2005	D. ADDERLEY
Permit : VIC RL6	Longitude : 148°42'24.72"E	12 1/4" Hole to (mMDRT) :	Total Depth Date :	A. DUNN
Field : BASKER	UTM Co-ord X (m E): 649251.9	8 1/2" Hole to (mMDRT) :	Total Depth (mMDRT):	S. RAJA
Basin : GIPPSLAND	UTM Co-ord Y (m N): 5759566	30" Conductor @ (mMDRT) : 208	True Vertical Depth (mTVDSS):	P. RADY
Well Type : APPRAISAL	RT to MSL (m): 21.5	13 3/8" Shoe @ (mMDRT) : 1000	Log Scale : 1/ 500	
Rig Name : Ocean Patriot	RT to Sea Bed (m): 174	9 5/8" Shoe @ (mMDRT) :	Final Status :	

ABBREVIATIONS		LITHOLOGY LEGEND				ENGINEERING LEGEND	
MW Mud Weight	WOB Weight on Bit (klbs)	Marl	Quartzite	Siltstone	Rudists	Essai non concl	Mud loss
FV Funnel Viscosity	RPM Rotations Per Min	Clay, Sand Lime	ar. Sandstone	f to vf Sand f	Sponges	Aucun fluide re	
PV Plastic Viscosity	FLW Flow Rate (gpm)	do. Shale	bitum. Shale (b)	Fossils	Sporomorphs	TEST Test	← RFT
YP Yield Point	SPP Pump Pressure (psi)	ca. Shale	Claystone	Algae	Tigillites	Filtrat	← FIT
Gel Gel Strength	RR Re-Run Bit	sandy Shale	Fine SST	Lithic Fragment	Vertebrates	Deviation curve	DST
WL Water Loss	TG Trip Gas	si. Claystone	sa. Shale	Belemnits	Wood silicified	Mud gain	Cement
KCI Potassium Chloride	CG Connection Gas					Boué	
Cl Chlorides	BG Background Gas						
Incl Inclination	DGP Drilled Gas Peak						
Az Azimuth	MM Mud Motor						





WOB: 15-21 kibs
 RPM: 240 (Surf+MM)
 SPP: 1880-2090 psi
 FLW: 928 gpm

WOB: 21-25 kibs
 RPM: 235-245 (Surf+MM)
 SPP: 2060-2200 psi
 FLW: 910-920 gpm

Survey @ 1065.0m: 0.18° 5.0Az

MARL: a/a.

Survey @ 1093.9m: 0.22° 331.1Az

ARGILLACEOUS LIMESTONE:
 lt gry, lt olv gry, mnr yel gry, com
 slty, mnr aren, occ carb spks, rr
 glauc spks, v sft-sft, blk-y-sbbkly.

Survey @ 1122.8m: 0.14° 342.3Az

ARGILLACEOUS LIMESTONE:
 lt gry, lt olv gry, mnr yel gry, com
 slty, mnr aren, occ carb spks, rr
 carb lams, v sft-sft, blk-y-sbbkly.

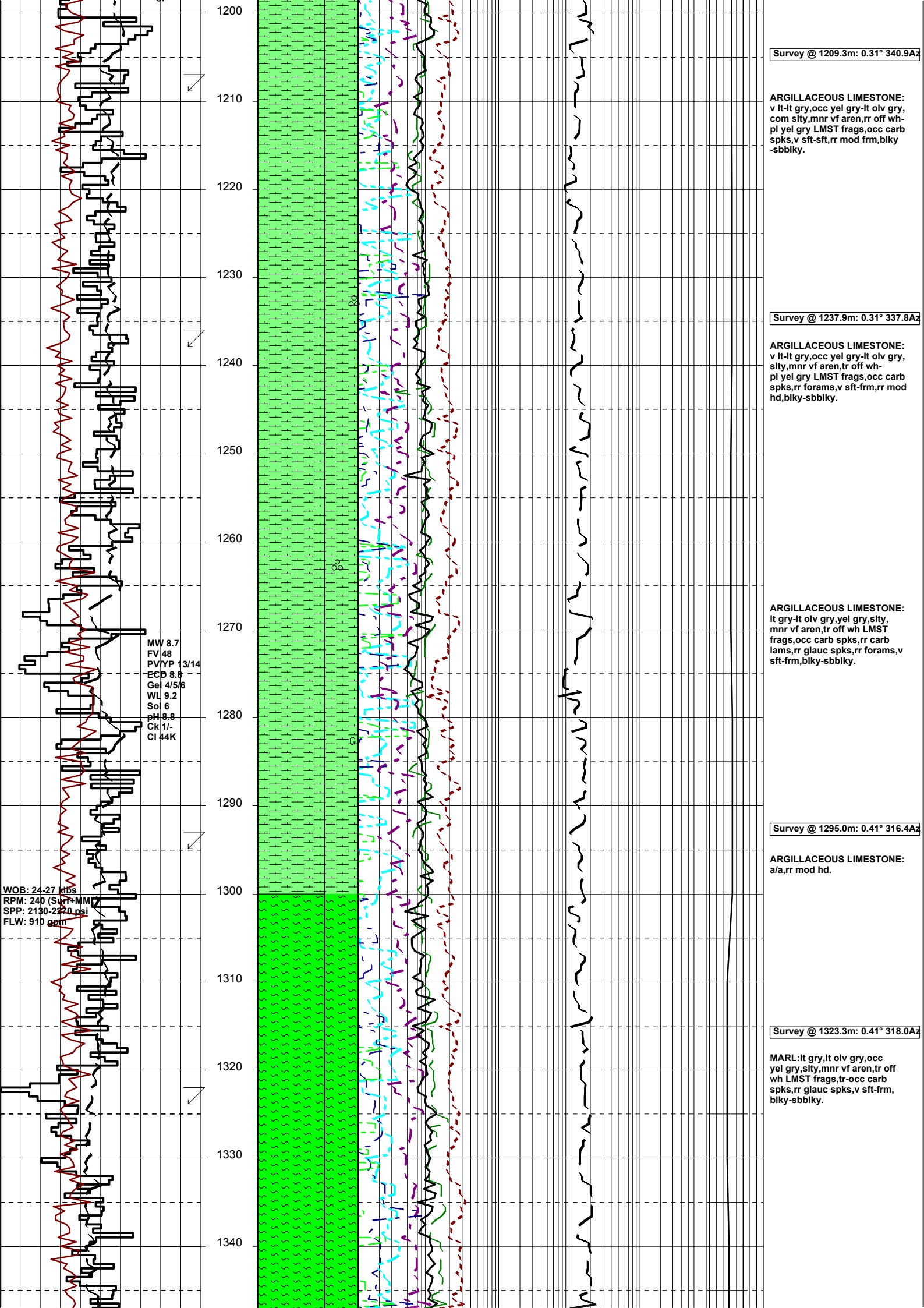
Survey @ 1151.7m: 0.31° 339.3Az

ARGILLACEOUS LIMESTONE:
 v lt-lt gry, yel gry, lt olv gry, com
 slty, mnr vf aren, mod com carb
 spks, rr carb lams, v sft-sft, rr
 mod frm, blk-y-sbbkly.

Survey @ 1180.5m: 0.25° 318.6Az

ARGILLACEOUS LIMESTONE:
 v lt-lt gry, occ yel gry-lt olv gry,
 com slty, mnr vf aren, mod com
 carb spks, rr forams, v sft-sft, rr
 mod frm, blk-y-sbbkly.

ARGILLACEOUS LIMESTONE:
 gen a/a, rr pyr foss.



Survey @ 1209.3m: 0.31° 340.9Az

ARGILLACEOUS LIMESTONE:
v lt-lt gry,occ yel gry-lt olv gry,
com slty,mnr vf aren,rr off wh-
pl yel gry LMST frags,occ carb
spks,v sft-sft,rr mod frm,blky
-sbbiky.

Survey @ 1237.9m: 0.31° 337.8Az

ARGILLACEOUS LIMESTONE:
v lt-lt gry,occ yel gry-lt olv gry,
slty,mnr vf aren,tr off wh-
pl yel gry LMST frags,occ carb
spks,rr forams,v sft-frm,rr mod
hd,blky-sbbiky.

MW 8.7
FV 48
PV/YP 13/14
ECD 8.8
Gel 4/5/6
WL 9.2
Sol 6
pH 8.8
CK 1/-
CI 44K

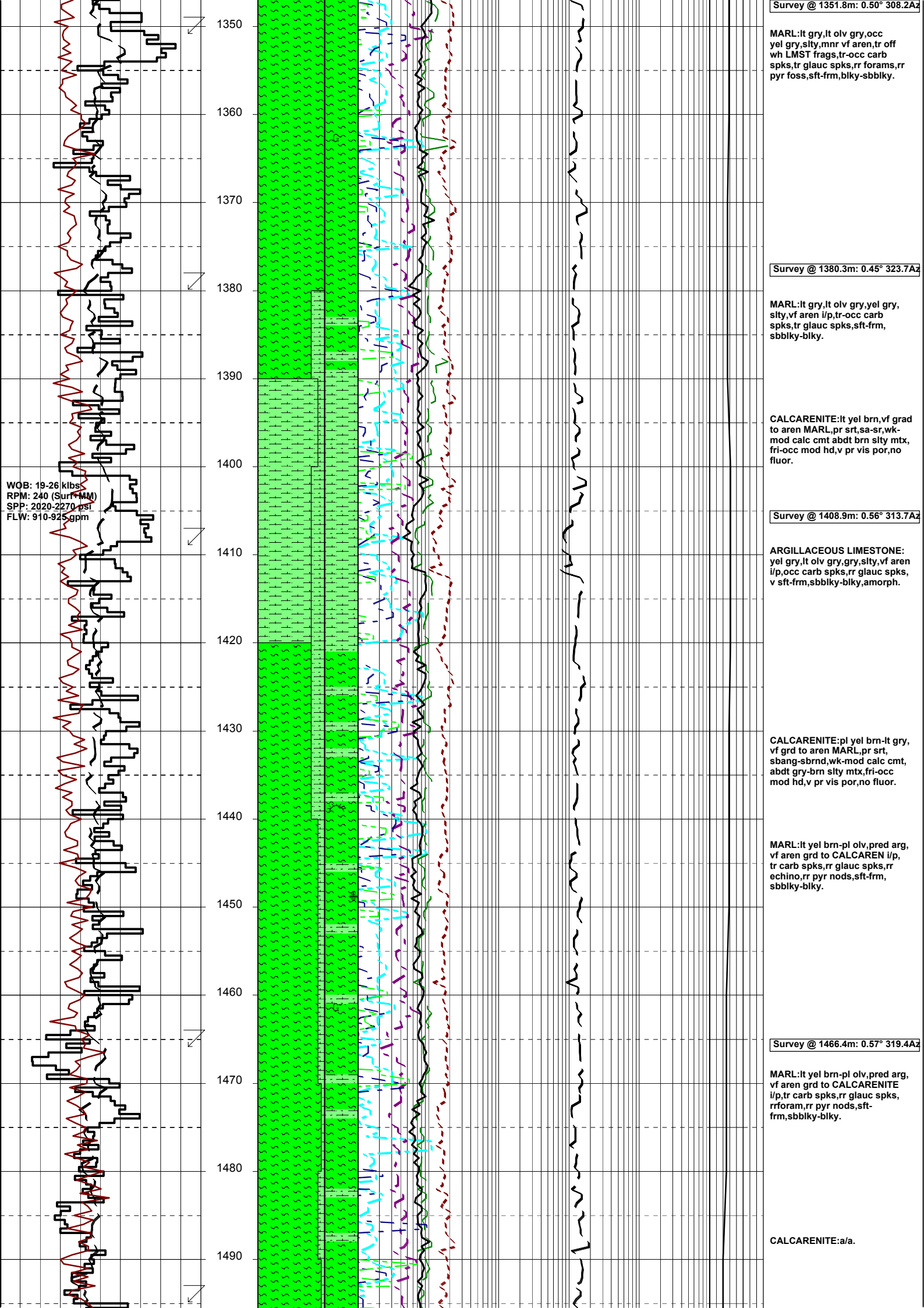
Survey @ 1295.0m: 0.41° 316.4Az

ARGILLACEOUS LIMESTONE:
a/a,rr mod hd.

WOB: 24-27 mbs
RPM: 240 (Surf-MM)
SPP: 2130-2270 psi
FLW: 910 gpm

Survey @ 1323.3m: 0.41° 318.0Az

MARL:lt gry,lt olv gry,occ
yel gry,slty,mnr vf aren,tr off
wh LMST frags,tr-occ carb
spks,rr glauc spks,v sft-frm,
blky-sbbiky.



Survey @ 1351.8m: 0.50° 308.2Az

MARL:lt gry,lt olv gry,occ yel gry,silty,mnr vf aren,tr off wh LMST frags,tr-occ carb spks,tr glauc spks,rr forams,rr pyr foss,sft frm,blky-sbbiky.

Survey @ 1380.3m: 0.45° 323.7Az

MARL:lt gry,lt olv gry,yel gry, silty,vf aren i/p,tr-occ carb spks,tr glauc spks,sft frm, sbbiky-blky.

CALCARENITE:lt yel brn,vf grad to aren MARL,pr srt,sa-sr,wk-mod calc cmt abdt brn silty mtx, fri-occ mod hd,v pr vis por,no fluor.

Survey @ 1408.9m: 0.56° 313.7Az

ARGILLACEOUS LIMESTONE: yel gry,lt olv gry,gry,silty,vf aren i/p,occ carb spks,rr glauc spks, v sft frm,sbbiky-blky,amorph.

CALCARENITE:pl yel brn-lt gry, vf grd to aren MARL,pr srt, sbang-sbrnd,wk-mod calc cmt, abdt gry-brn silty mtx,fri-occ mod hd,v pr vis por,no fluor.

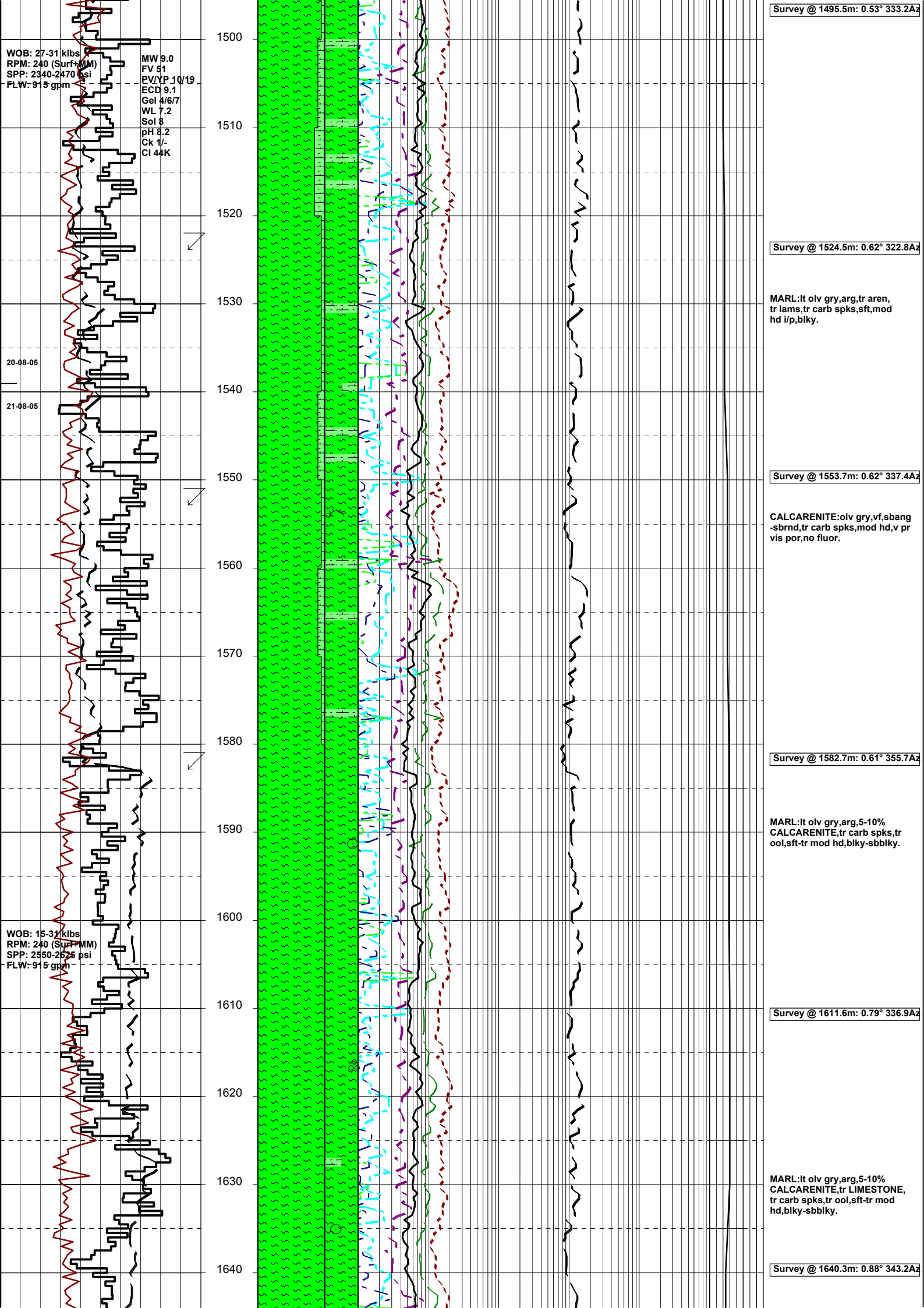
MARL:lt yel brn-pl olv,pred arg, vf aren grd to CALCAREN i/p, tr carb spks,rr glauc spks,rr echino,rr pyr nods,sft frm, sbbiky-blky.

Survey @ 1466.4m: 0.57° 319.4Az

MARL:lt yel brn-pl olv,pred arg, vf aren grd to CALCAREN i/p, tr carb spks,rr glauc spks, rrforam,rr pyr nods,sft frm,sbbiky-blky.

CALCARENITE:a/a.

WOB: 19-26 klbs
RPM: 240 (Surf+MM)
SPP: 2020-2270 psi
FLW: 910-925 gpm



WOB: 27-31 klbs
RPM: 240 (Surf-MM)
SPP: 2340-2470 psi
FLW: 915 gpm

MW 9.0
FV 51
PV/YP 10/19
ECD 9.1
Gel 4/6/7
WL 7.2
Sol 8
pH 8.2
Ck 1/-
CI 44K

20-08-05

21-08-05

WOB: 15-31 klbs
RPM: 240 (Surf-MM)
SPP: 2550-2625 psi
FLW: 915 gpm

Survey @ 1495.5m: 0.53° 333.2Az

Survey @ 1524.5m: 0.62° 322.8Az

MARL:lt olv gry,arg,tr aren,
tr lams,tr carb spks,sft,mod
hd i/p,blky.

Survey @ 1553.7m: 0.62° 337.4Az

CALCARENITE:olv gry,vf,sbang
-sbrnd,tr carb spks,mod hd,v pr
vis por,no fluor.

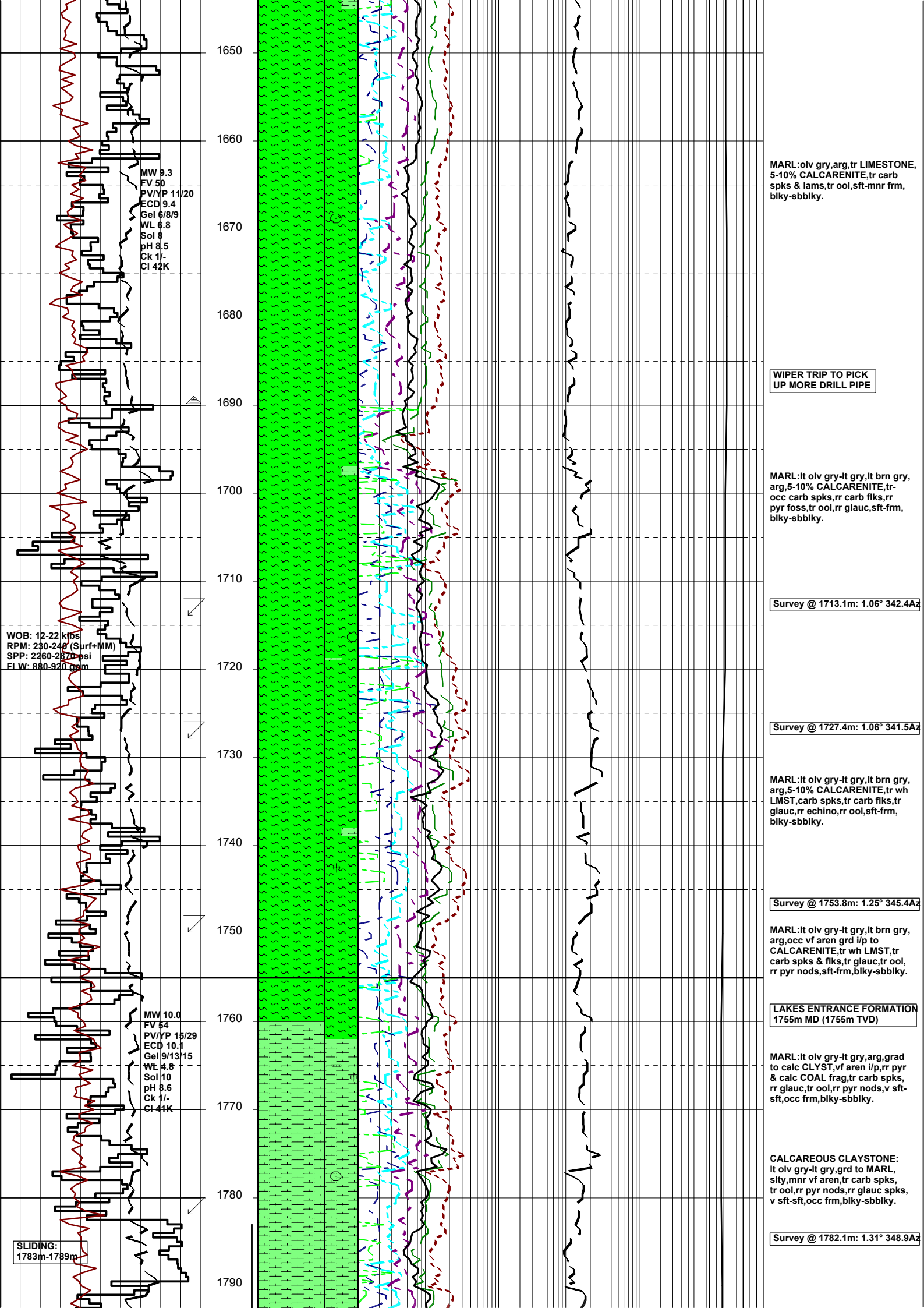
Survey @ 1582.7m: 0.61° 355.7Az

MARL:lt olv gry,arg,5-10%
CALCARENITE,tr carb spks,tr
ool,sft-tr mod hd,blky-sbblky.

Survey @ 1611.6m: 0.79° 336.9Az

MARL:lt olv gry,arg,5-10%
CALCARENITE,tr LIMESTONE,
tr carb spks,tr ool,sft-tr mod
hd,blky-sbblky.

Survey @ 1640.3m: 0.88° 343.2Az



MW 9.3
 FV 50
 PV/YP 11/20
 ECD 9.4
 Gel 6/8/9
 WL 6.8
 Sol 8
 pH 8.5
 Ck 1/-
 CI 42K

MARL: olv gry, arg, tr LIMESTONE,
 5-10% CALCARENITE, tr carb
 spks & lams, tr ool, sft-mnr frm,
 blk-y-sbbkly.

WIPER TRIP TO PICK
 UP MORE DRILL PIPE

MARL: lt olv gry-lt gry, lt brn gry,
 arg, 5-10% CALCARENITE, tr-
 occ carb spks, rr carb flks, rr
 pyr foss, tr ool, rr glauc, sft-frm,
 blk-y-sbbkly.

Survey @ 1713.1m: 1.06° 342.4Az

WOB: 12-22 kips
 RPM: 230-240 (Surf+MM)
 SPP: 2260-2870 psi
 FLW: 880-920 gpm

Survey @ 1727.4m: 1.06° 341.5Az

MARL: lt olv gry-lt gry, lt brn gry,
 arg, 5-10% CALCARENITE, tr wh
 LMST, carb spks, tr carb flks, tr
 glauc, rr echino, rr ool, sft-frm,
 blk-y-sbbkly.

Survey @ 1753.8m: 1.25° 345.4Az

MARL: lt olv gry-lt gry, lt brn gry,
 arg, occ vf aren grd i/p to
 CALCARENITE, tr wh LMST, tr
 carb spks & flks, tr glauc, tr ool,
 rr pyr nods, sft-frm, blk-y-sbbkly.

LAKES ENTRANCE FORMATION
 1755m MD (1755m TVD)

MARL: lt olv gry-lt gry, arg, grad
 to calc CLYST, vf aren i/p, rr pyr
 & calc COAL frag, tr carb spks,
 rr glauc, tr ool, rr pyr nods, v sft-
 sft, occ frm, blk-y-sbbkly.

CALCAREOUS CLAYSTONE:
 lt olv gry-lt gry, grd to MARL,
 slty, mnr vf aren, tr carb spks,
 tr ool, rr pyr nods, rr glauc spks,
 v sft-sft, occ frm, blk-y-sbbkly.

Survey @ 1782.1m: 1.31° 348.9Az

SLIDING:
 1783m-1789m

MW 10.0
 FV 54
 PV/YP 15/29
 ECD 10.1
 Gel 9/13/15
 WL 4.8
 Sol 10
 pH 8.6
 Ck 1/-
 CI 44K

WOB: 17-20 klbs
RPM: 225-235 (Surf+MM)
SPP: 2260-2870 psi
FLW: 880-920 gpm

MW 10'0
FV 54
PV/YP 13/26
ECD 10.1
Gel 8/12/-
WL 5.4
Sol 10
pH 8.9
GK-1/-
CI 43K

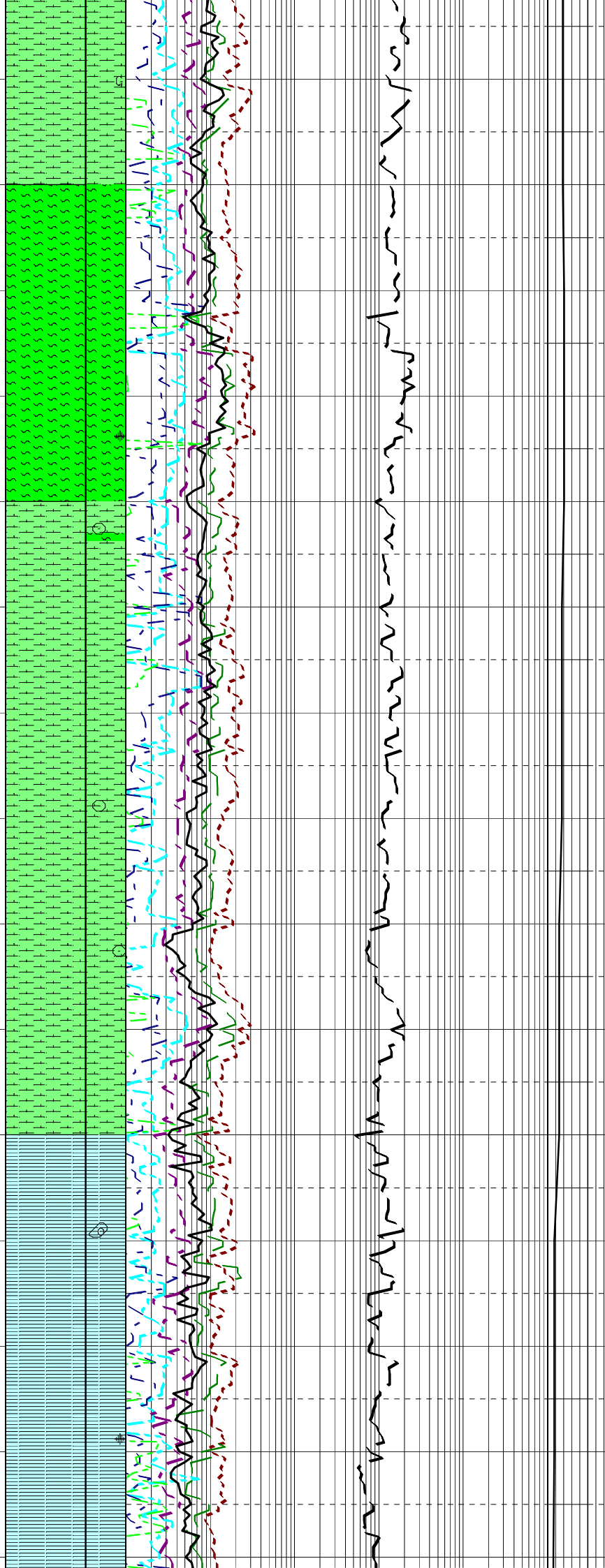
21-08-05

22-08-05

WOB: 17-20 klbs
RPM: 225-235 (Surf+MM)
SPP: 2850-3190 psi
FLW: 860-930 gpm

SLIDING:
1929m-1938m

1800
1810
1820
1830
1840
1850
1860
1870
1880
1890
1900
1910
1920
1930
1940



CALCAREOUS CLAYSTONE:
med lt gry-lt olv gry,slty,mnr vf aren,rr carb spks,rr ool,v sft-sft,occ frm,blky-sbblky.

Survey @ 1810.7m: 1.32° 347.3Az

MARL:med lt gry-lt olv gry,slty,mnr vf aren,rr carb spks,rr ool,rr pyr lam,v sft-sft,occ frm,blky-sbblky.

Survey @ 1839.5m: 1.17° 347.3Az

MARL:med lt gry-lt olv gry,slty,mnr vf aren,tr wh LMST frags,rr carb spks,rr carb spks,rr ool,rr pyr nods,v sft-sft,occ frm,blky-sbblky.

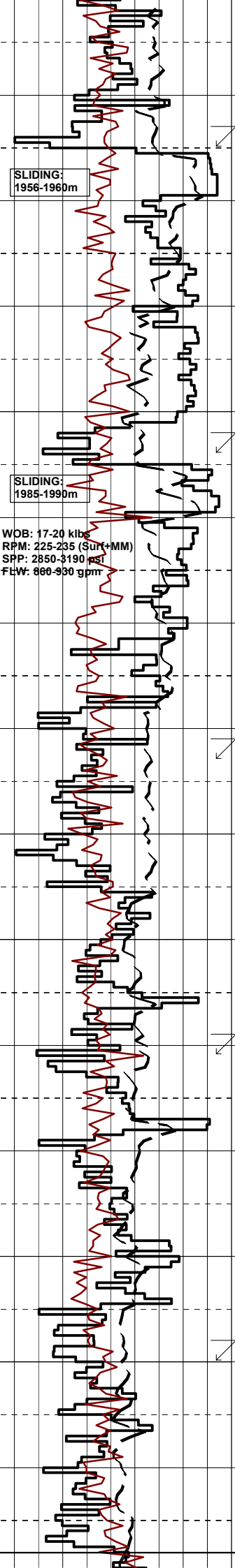
Survey @ 1868.4m: 1.33° 345.6Az

CALCAREOUS CLAYSTONE:
med gry,arg,slty i/p,tr vf aren,tr calcite,tr dissem pyr,tr carb spks & lams,rr ool,sft-frm,blky-sbblky.

Survey @ 1897.6m: 1.53° 346.9Az

CALCAREOUS CLAYSTONE:
med gry,arg,slty i/p,tr vf aren,tr calcite,tr dissem pyr,tr carb spks & lams,rr ool,tr foss,sft-frm,blky-sbblky.

Survey @ 1926.7m: 1.67° 346.2Az



1950
1960
1970
1980
1990
2000
2010
2020
2030
2040
2050
2060
2070
2080
2090

CLAYSTONE:lt med gry-med gry,
arg,15-20% calc,tr vf aren,tr
calcite,tr disse pyr,rr ool,
foss,sft frm,sbbiky-blky.

Survey @ 1955.7m: 1.49° 331.5Az

CLAYSTONE:lt med gry-med gry,
arg,15-20% calc,tr vf aren,tr
calcite,tr disse pyr,rr ool,
foss,sft frm,sbbiky-blky.

Survey @ 1984.1m: 1.39° 329.8Az

CLAYSTONE:dk med gry-olv gry,
arg,14% calc,tr calcite,rr ool,
tr disse pyr,tr glauc,tr lams,
sft frm,sbbiky-blky.

Survey @ 2012.5m: 1.45° 328.2Az

CLAYSTONE:dk med gry-olv gry,
arg,17% calc,tr calcite,rr ool,
tr disse pyr,tr foss,tr lams,
sft frm,sbbiky-blky.

Survey @ 2040.9m: 1.49° 334.3Az

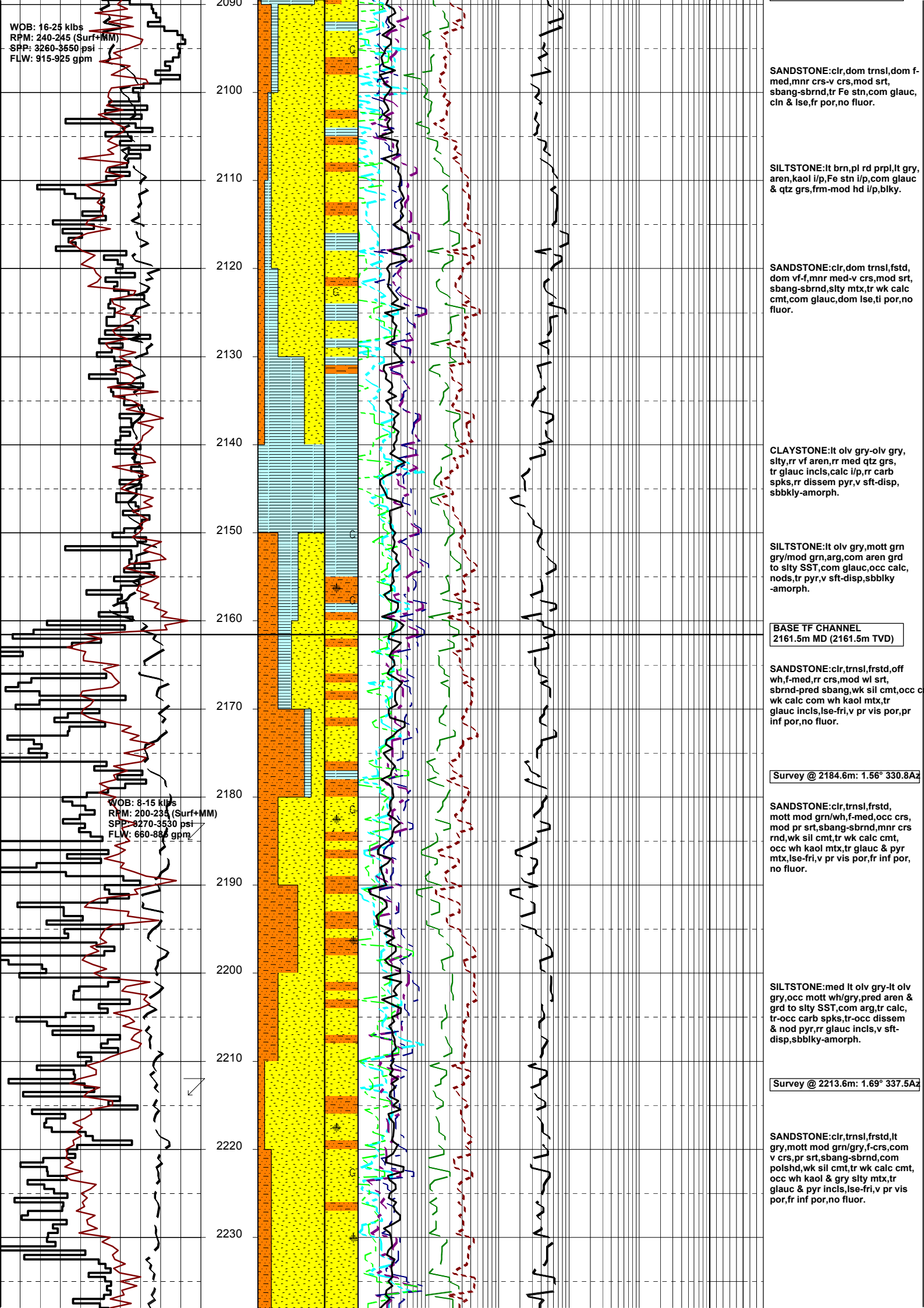
CLAYSTONE:lt med gry-lt olv
gry,arg,20% calc,tr calcite,rr
glauc,disse pyr,tr vf qtz grns,
tr lams,v sft-sft,sbbiky-blky.

Survey @ 2069.4m: 1.39° 333.9Az

LATROBE FORMATION
2088.5m MD (2088.5m TVD)

WOB: 16-25 klbs
 RPM: 240-245 (Surf+MM)
 SPP: 3260-3550 psi
 FLW: 915-925 gpm

WOB: 8-15 klbs
 RPM: 200-235 (Surf+MM)
 SPP: 8270-3530 psi
 FLW: 660-885 gpm



SANDSTONE:clr,dom trnsl,dom f-med,mnr crs-v crs,mod srt, sbang-sbrnd,tr Fe stn,com glauc, cin & lse,fr por,no fluor.

SILTSTONE:lt brn,pl rd prpl,lt gry, aren,kaol l/p,Fe stn i/p,com glauc & qtz grs,frm-mod hd i/p,blky.

SANDSTONE:clr,dom trnsl,fstd, dom vf-f,mnr med-v crs,mod srt, sbang-sbrnd,slty mtx,tr wk calc cmt,com glauc,dom lse,ti por,no fluor.

CLAYSTONE:lt olv gry-olv gry, slty,rr vf aren,rr med qtz grs, tr glauc inclc,calc i/p,rr carb spks,rr dissem pyr,v sft-disp, sbbkly-amorph.

SILTSTONE:lt olv gry,mott grn gry/mod grn,arg,com aren grd to slty SST,com glauc,occ calc, nods,tr pyr,v sft-disp,sbbkly -amorph.

BASE TF CHANNEL
 2161.5m MD (2161.5m TVD)

SANDSTONE:clr,trnsl,frstd,off wh,f-med,rr crs,mod wl srt, sbrnd-pred sbang,wk sil cmt,occ wk calc com wh kaol mtx,tr glauc inclc,lse-fri,v pr vis por,pr inf por,no fluor.

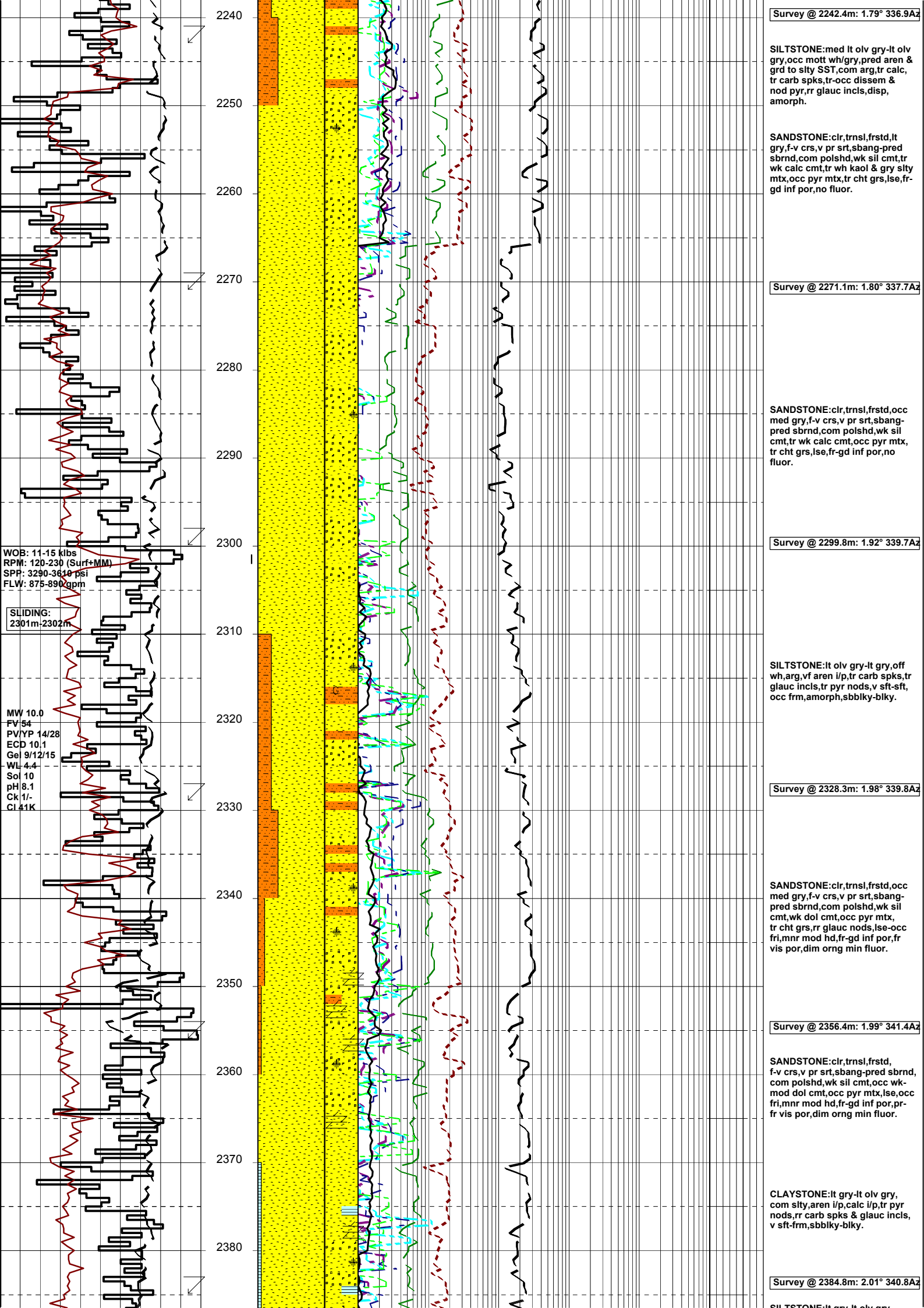
Survey @ 2184.6m: 1.56° 330.8Az

SANDSTONE:clr,trnsl,frstd, mott mod grn/wh,f-med,occ crs, mod pr srt,sbang-sbrnd,mnr crs rnd,wk sil cmt,tr wk calc cmt, occ wh kaol mtx,tr glauc & pyr mtx,lse-fri,v pr vis por,fr inf por, no fluor.

SILTSTONE:med lt olv gry-lt olv gry,occ mott wh/gry,pred aren & grd to slty SST,com arg,tr calc, tr-occ carb spks,tr-occ dissem & nod pyr,rr glauc inclc,v sft-disp,sbbkly-amorph.

Survey @ 2213.6m: 1.69° 337.5Az

SANDSTONE:clr,trnsl,frstd,lt gry,mott mod grn/gry,f-crs,com v crs,pr srt,sbang-sbrnd,com polshd,wk sil cmt,tr wk calc cmt, occ wh kaol & gry slty mtx,tr glauc & pyr inclc,lse-fri,v pr vis por,fr inf por,no fluor.



Survey @ 2242.4m: 1.79° 336.9Az

SILTSTONE: med lt olv gry-lt olv gry, occ mott wh/gry, pred aren & grd to slty SST, com arg, tr calc, tr carb spks, tr-occ dissem & nod pyr, rr glauc inclis, disp, amorph.

SANDSTONE: clr, trnsl, frstd, lt gry, f-v crs, v pr srt, sbang-pred sbrnd, com polshd, wk sil cmt, tr wk calc cmt, tr wh kaol & gry slty mtx, occ pyr mtx, tr cht grs, lse, fr-gd inf por, no fluor.

Survey @ 2271.1m: 1.80° 337.7Az

SANDSTONE: clr, trnsl, frstd, occ med gry, f-v crs, v pr srt, sbang-pred sbrnd, com polshd, wk sil cmt, tr wk calc cmt, occ pyr mtx, tr cht grs, lse, fr-gd inf por, no fluor.

Survey @ 2299.8m: 1.92° 339.7Az

SILTSTONE: lt olv gry-lt gry, off wh, arg, vf aren i/p, tr carb spks, tr glauc inclis, tr pyr nods, v sft-sft, occ frm, amorph, sbbiky-blky.

Survey @ 2328.3m: 1.98° 339.8Az

SANDSTONE: clr, trnsl, frstd, occ med gry, f-v crs, v pr srt, sbang-pred sbrnd, com polshd, wk sil cmt, wk dol cmt, occ pyr mtx, tr cht grs, rr glauc nods, lse-occ fri, mnr mod hd, fr-gd inf por, fr vis por, dim org min fluor.

Survey @ 2356.4m: 1.99° 341.4Az

SANDSTONE: clr, trnsl, frstd, f-v crs, v pr srt, sbang-pred sbrnd, com polshd, wk sil cmt, occ wk-mod dol cmt, occ pyr mtx, lse, occ fri, mnr mod hd, fr-gd inf por, pr-fr vis por, dim org min fluor.

CLAYSTONE: lt gry-lt olv gry, com slty, aren i/p, calc i/p, tr pyr nods, rr carb spks & glauc inclis, v sft-frm, sbbiky-blky.

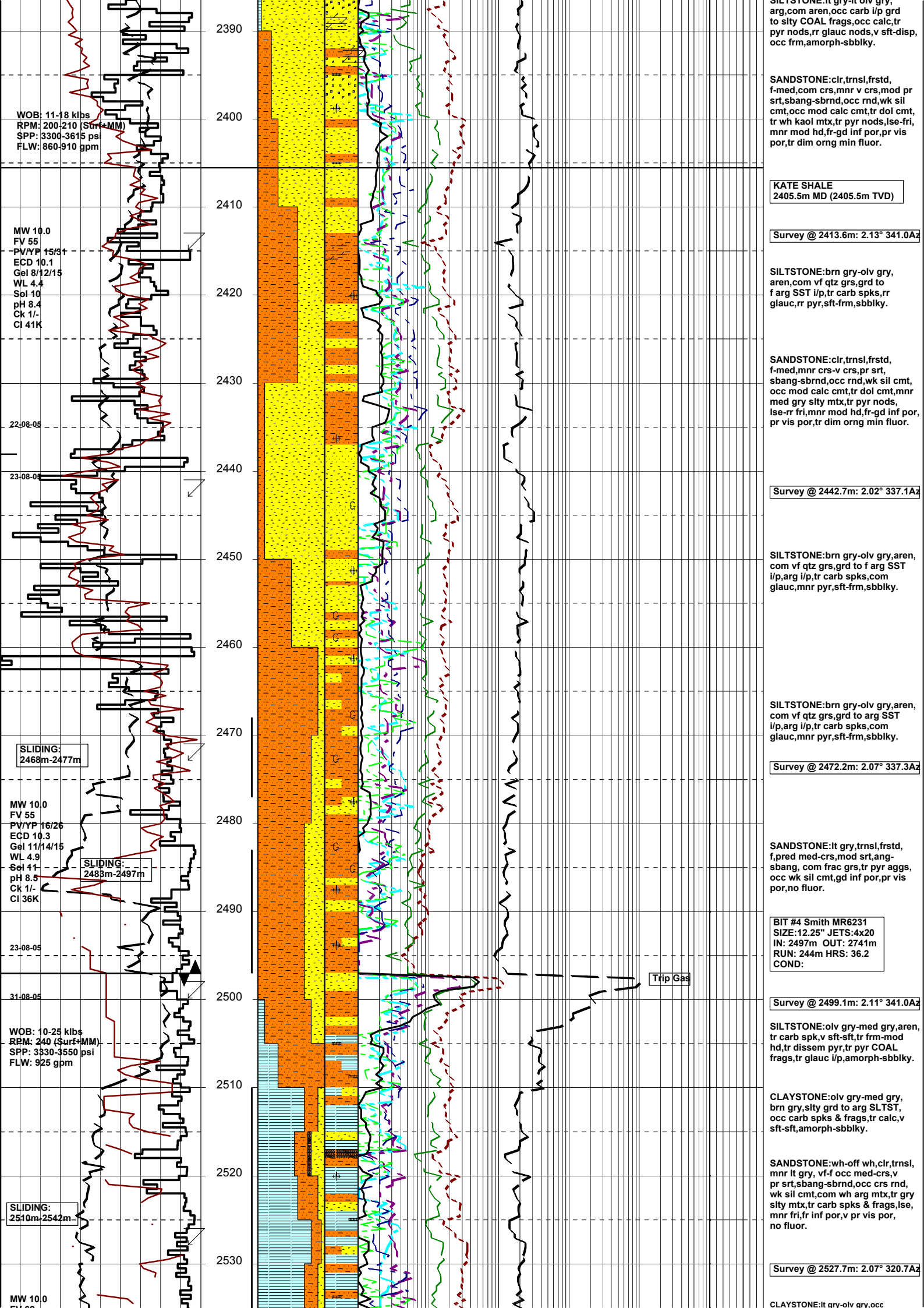
Survey @ 2384.8m: 2.01° 340.8Az

SILTSTONE: lt gry-lt olv gry,

WOB: 11-15 kibs
RPM: 120-230 (Surf+MM)
SPP: 3290-3610 psi
FLW: 875-890 gpm

SLIDING:
2301m-2302m

MW 10.0
FV 54
PV/YP 14/28
ECD 10.1
Gel 9/12/15
WL 4.4
Sol 10
pH 8.1
Ck 1/-
Cl 41K



WOB: 11-18 klbs
 RPM: 200-210 (Surf+MM)
 SPP: 3300-3615 psi
 FLW: 860-910 gpm

MW 10.0
 FV 55
 PV/YP 15/34
 ECD 10.1
 Gel 8/12/15
 WL 4.4
 Sol 10
 pH 8.4
 Ck 1/-
 Cl 41K

22-08-05

23-08-00

SLIDING:
 2468m-2477m

MW 10.0
 FV 55
 PV/YP 16/26
 ECD 10.3
 Gel 11/14/15
 WL 4.9
 Sol 11
 pH 8.5
 Ck 1/-
 Cl 36K

SLIDING:
 2483m-2497m

23-08-05

31-08-05

WOB: 10-25 klbs
 RPM: 240 (Surf+MM)
 SPP: 3330-3550 psi
 FLW: 925 gpm

SLIDING:
 2510m-2542m

MW 10.0

SANDSTONE:clr,tnsl,frstd,
 f-med,com crs,mnr v crs,mod pr
 srt,sbang-sbrnd,occ rnd,wk sil
 cmt,occ mod calc cmt,tr dol cmt,
 tr wh kaol mtx,tr pyr nods,lse-fri,
 mnr mod hd,fr-gd inf por,pr vis
 por,tr dim orgn min fluor.

KATE SHALE
 2405.5m MD (2405.5m TVD)

Survey @ 2413.6m: 2.13° 341.0Az

SILTSTONE:brn gry-olv gry,
 aren,com vf qtz grs,grd to
 f arg SST i/p,tr carb spks,rr
 glauc,rr pyr,sft-frm,sbbkly.

SANDSTONE:clr,tnsl,frstd,
 f-med,mnr crs-v crs,pr srt,
 sbang-sbrnd,occ rnd,wk sil cmt,
 occ mod calc cmt,tr dol cmt,mnr
 med gry slty mtx,tr pyr nods,
 lse-rr fri,mnr mod hd,fr-gd inf por,
 pr vis por,tr dim orgn min fluor.

Survey @ 2442.7m: 2.02° 337.1Az

SILTSTONE:brn gry-olv gry,aren,
 com vf qtz grs,grd to f arg SST
 i/p,arg i/p,tr carb spks,com
 glauc,mnr pyr,sft-frm,sbbkly.

SILTSTONE:brn gry-olv gry,aren,
 com vf qtz grs,grd to arg SST
 i/p,arg i/p,tr carb spks,com
 glauc,mnr pyr,sft-frm,sbbkly.

Survey @ 2472.2m: 2.07° 337.3Az

SANDSTONE:lt gry,tnsl,frstd,
 f,pred med-crs,mod srt,ang-
 sbang, com frac grs,tr pyr aggs,
 occ wk sil cmt,gd inf por,pr vis
 por,no fluor.

BIT #4 Smith MR6231
 SIZE:12.25" JETS:4x20
 IN: 2497m OUT: 2741m
 RUN: 244m HRS: 36.2
 COND:

Survey @ 2499.1m: 2.11° 341.0Az

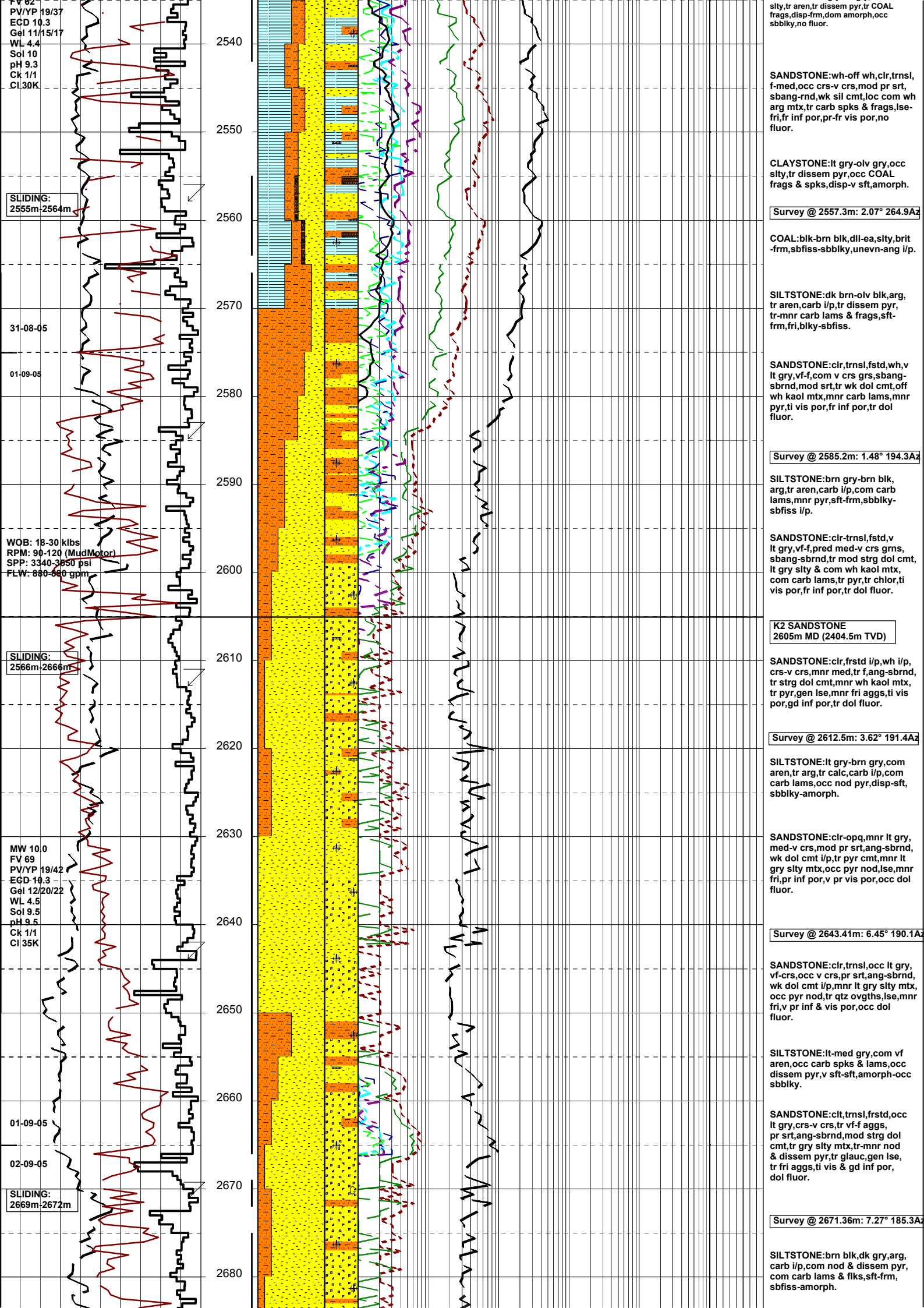
SILTSTONE:olv gry-med gry,aren,
 tr carb spk,v sft-sft,tr frm-mod
 hd,tr disse pyr,tr pyr COAL
 frags,tr glauc i/p,amorph-sbbkly.

CLAYSTONE:olv gry-med gry,
 brn gry,slty grd to arg SLTST,
 occ carb spks & frags,tr calc,v
 sft-sft,amorph-sbbkly.

SANDSTONE:wh-off wh,clr,tnsl,
 mnr lt gry,vf-f occ med-crs,v
 pr srt,sbang-sbrnd,occ crs rnd,
 wk sil cmt,com wh arg mtx,tr gry
 slty mtx,tr carb spks & frags,lse,
 mnr fri,fr inf por,v pr vis por,
 no fluor.

Survey @ 2527.7m: 2.07° 320.7Az

CLAYSTONE:lt gry-olv gry,occ



FV 62
PV/YP 19/37
EGD 10.3
Gel 11/15/17
WL 4.4
Sol 10
pH 9.3
Ck 1/1
Cl 30K

SLIDING:
2555m-2564m

31-08-05

01-09-05

WOB: 18-30 klbs
RPM: 90-120 (MudMotor)
SPP: 3340-3650 psi
FLW: 880-680 gpm

SLIDING:
2566m-2666m

MW 10.0
FV 69
PV/YP 19/42
EGD 10.3
Gel 12/20/22
WL 4.5
Sol 9.5
pH 9.5
Ck 1/1
Cl 35K

01-09-05

02-09-05

SLIDING:
2669m-2672m

stly, tr aren, tr disse pyr, tr COAL frags, disp-frm, dom amorph, occ sbbiky, no fluor.

SANDSTONE: wh-off wh, clr, trnsi, f-med, occ crs-v crs, mod pr srt, sbang-rnd, wk sil cmt, loc com wh arg mtx, tr carb spks & frags, lse-fri, fr inf por, pr-fr vis por, no fluor.

CLAYSTONE: lt gry-olv gry, occ stly, tr disse pyr, occ COAL frags & spks, disp-v sft, amorph.

Survey @ 2557.3m: 2.07° 264.9Az

COAL: blk-brn blk, dll-ea, stly, brit -frm, sbfiss-sbbiky, unevn-ang i/p.

SILTSTONE: dk brn-olv blk, arg, tr aren, carb i/p, tr disse pyr, tr-mnr carb lams & frags, sft-frm, fri, blkly-sbfiss.

SANDSTONE: clr, trnsi, fstd, wh, v lt gry, vf-f, com v crs grs, sbang-sbrnd, mod srt, tr wk dol cmt, off wh kaol mtx, mnr carb lams, mnr pyr, ti vis por, fr inf por, tr dol fluor.

Survey @ 2585.2m: 1.48° 194.3Az

SILTSTONE: brn gry-brn blk, arg, tr aren, carb i/p, com carb lams, mnr pyr, sft-frm, sbbiky-sbfiss i/p.

SANDSTONE: clr-trnsi, fstd, v lt gry, vf-f, pred med-v crs grns, sbang-sbrnd, tr mod strg dol cmt, lt gry stly & com wh kaol mtx, com carb lams, tr pyr, tr chlor, ti vis por, fr inf por, tr dol fluor.

K2 SANDSTONE
2605m MD (2404.5m TVD)

SANDSTONE: clr, frstd i/p, wh i/p, crs-v crs, mnr med, tr f, ang-sbrnd, tr strg dol cmt, mnr wh kaol mtx, tr pyr, gen lse, mnr fri aggs, ti vis por, gd inf por, tr dol fluor.

Survey @ 2612.5m: 3.62° 191.4Az

SILTSTONE: lt gry-brn gry, com aren, tr arg, tr calc, carb i/p, com carb lams, occ nod pyr, disp-sft, sbbiky-amorph.

SANDSTONE: clr-opq, mnr lt gry, med-v crs, mod pr srt, ang-sbrnd, wk dol cmt i/p, mnr lt gry stly mtx, occ pyr nod, lse, mnr fri, pr inf por, v pr vis por, occ dol fluor.

Survey @ 2643.41m: 6.45° 190.1Az

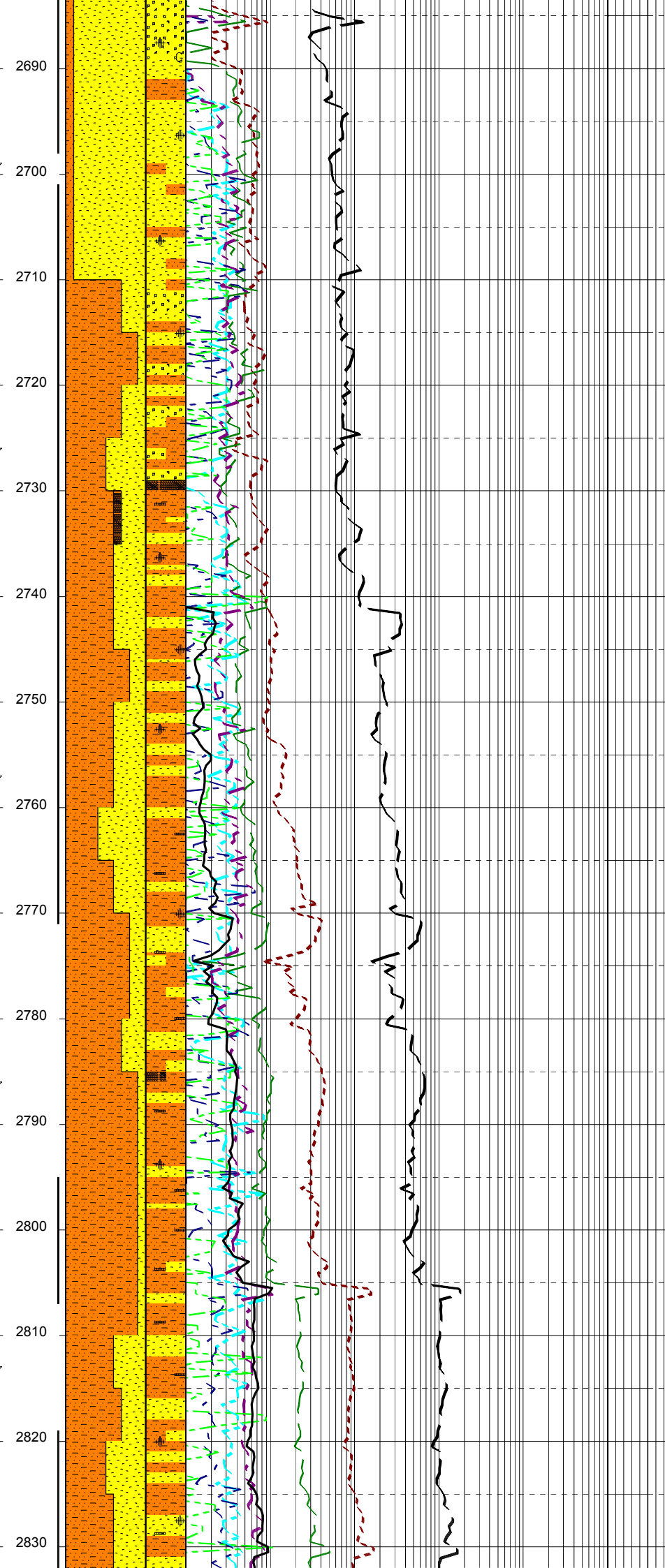
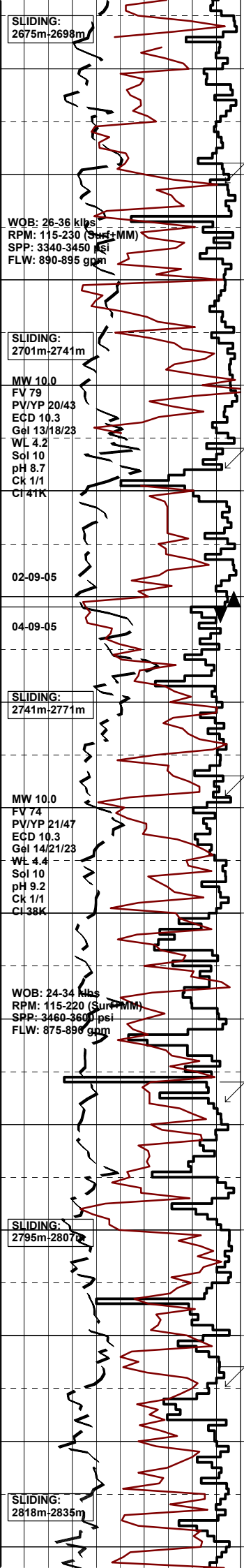
SANDSTONE: clr, trnsi, occ lt gry, vf-crs, occ v crs, pr srt, ang-sbrnd, wk dol cmt i/p, mnr lt gry stly mtx, occ pyr nod, tr qtz ovghs, lse, mnr fri, v pr inf & vis por, occ dol fluor.

SILTSTONE: lt-med gry, com vf aren, occ carb spks & lams, occ disse pyr, v sft-sft, amorph-occ sbbiky.

SANDSTONE: clt, trnsi, frstd, occ lt gry, crs-v crs, tr vf-f aggs, pr srt, ang-sbrnd, mod strg dol cmt, tr gry stly mtx, tr-mnr nod & disse pyr, tr glauc, gen lse, tr fri aggs, ti vis & gd inf por, dol fluor.

Survey @ 2671.36m: 7.27° 185.3Az

SILTSTONE: brn blk, dk gry, arg, carb i/p, com nod & disse pyr, com carb lams & flks, sft-frm, sbfiss-amorph.



SANDSTONE:clr,trnsl,frstd,off wh,lt gry,crs-v crs,tr vf-f aggs,pr srt,ang-sbrnd,mnr sil cmt,tr gry stly-off wh kaol mtx,tr-mnr nod & disse pyr,tr glauc,gen lse, tr fri aggs,ti vis & gd inf por, tr dol fluor.

SURVEY @ 2700.5m: 9.30° 184.7A

SILTSTONE:lt gry-lt olv gry,tr vf aren i/p,carb lam i/p,tr carb,tr pyr nod,v sft-sft,amorph-sbfiss.

SANDSTONE:clr-opq,mnr lt gry,f-crs,com v crs,v pr srt,ang-sbrnd,wk sil cmt,tr loc stly mtx,lse,tr fri,pr inf por,v pr vis por,no fluor.

COAL:blk,dll-ea,svbit i/p,pred brit,frm i/p,sbbkly-blky,unevn-ang.

SURVEY @ 2728.1m: 10.88° 181.9A

SANDSTONE:clr-opq,tr wh,dom crs,com f-med,v pr srt,ang-sbrnd,wk sil cmt,tr wh arg mtx,tr pyr nod,lse,tr fri,pr inf por,v pr vis por,no fluor.

Rmf @ 2741m: 0.11 ohm @ 75°F

BIT #5 HUGHES MXCOPH
SIZE:12.25" JETS:3x20,1x18
IN: 2741m OUT: 2956m
RUN: 215m HRS: 24.83
COND:

SILTSTONE:lt-med gry,olv gry,lt brn gry,mnr gry blk,vf aren,com arg,mnr carb,tr calc,occ-loc com carb spks,tr-occ pyr nods,v sft-frm,amorph-sbbkly,mnr sbfiss.

SURVEY @ 2757.9m: 13.90° 178.3A

SANDSTONE:dom clr,com opq, tr lt gry,f-crs,occ v crs,pr srt,ang-sbrnd,wk sil cmt,tr gry stly mtx,lse,tr fri,pr inf por,no fluor.

SILTSTONE:ltgry-med gry,olv gry pred arg,aren i/p,tr carb grd to COAL frags,tr carb spks,tr pyr nods,v sft-sft,tr mod hd,amorph-sbfiss.

SURVEY @ 2786.4m: 15.37° 180.97A

COAL(TR):blk-gry blk,dll-ea,tr svbit,slty grad to carb frags,sft-brit,sbbkly-sbfiss,unevn-ang.

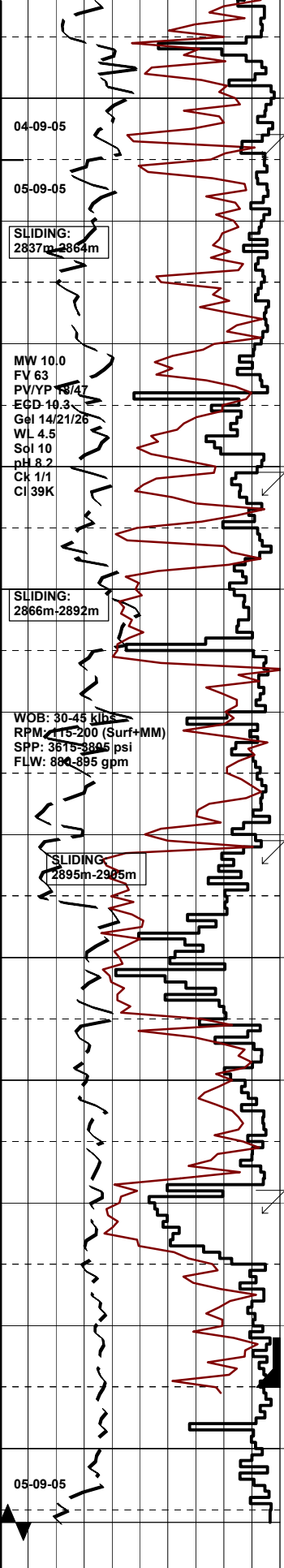
SANDSTONE:clr,trnsl,opq,tr lt gry,tr off wh,f-med,com crs-v crs,mod pr srt,ang-sbrnd,wk sil cmt, tr wh arg mtx,tr gry stly mtx,rr pyr mtx,tr carb incls,v pr vis por,pr inf por,no fluor.

SILTSTONE:lt gry-med gry,brn gry,trlv gry,pred arg,tr aren, tr COAL frags,tr carb spks, tr pyr nod,v sft-sft,tr mod hd, amorph-sbfiss.

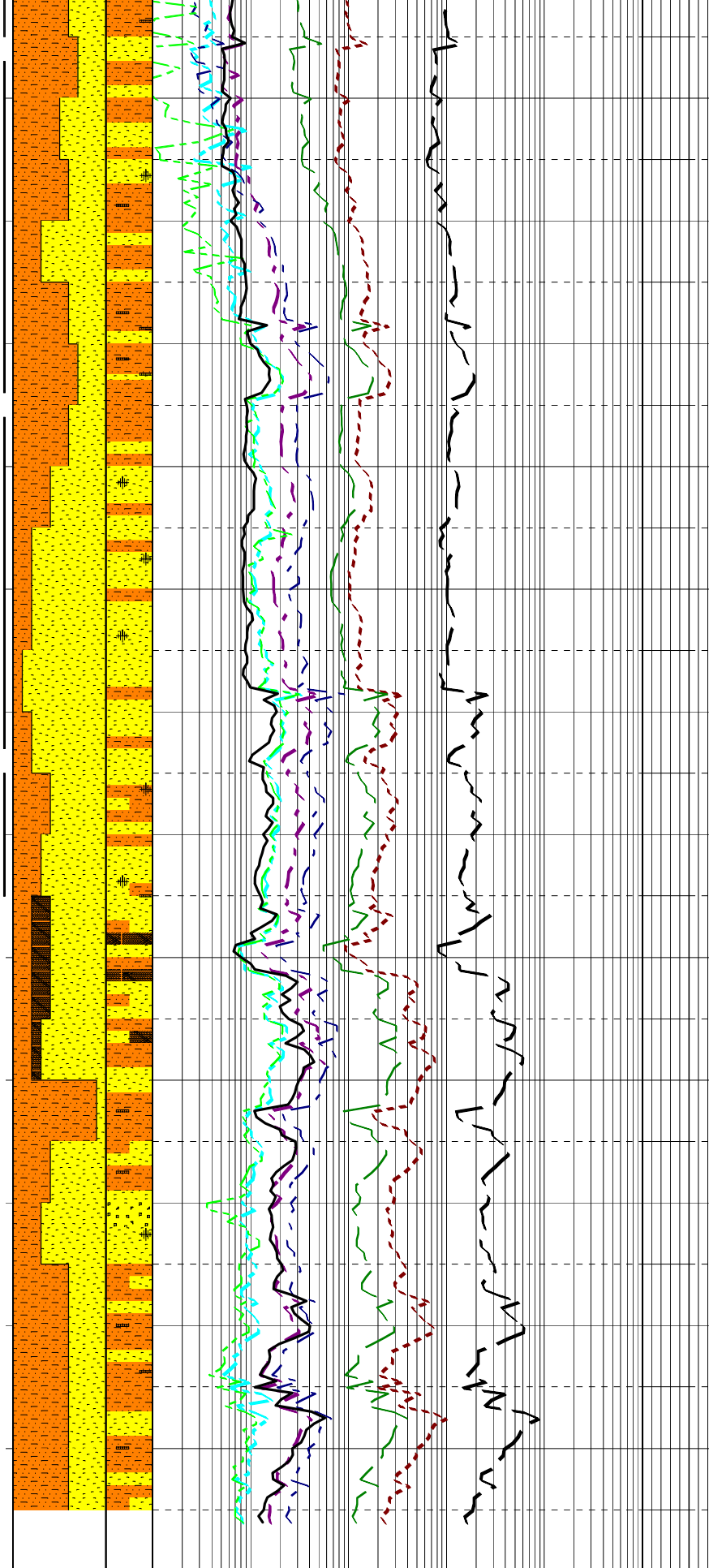
SURVEY @ 2814.8m: 16.98° 182.0A

SILTSTONE:lt brn gry-brn gry,lt-med gry,arg,mnr vf aren,tr-loc com carb spks & flks,occ carb grd to COAL frags,tr pyr nods,v sft-sft,amorph-sbfiss.

SANDSTONE:clr,trnsl,opq,tr lt gry,tr off wh,f-crs,occ v crs,mod pr srt,ang-sbrnd,wk sil cmt,tr wh arg mtx,tr gry stly mtx,rr pyr mtx,occ carb incls,v pr vis por,pr inf por,no fluor.



2840
04-09-05
05-09-05
2850
2860
2870
2880
2890
2900
2910
2920
2930
2940
2950
2960



SILTSTONE:lt brn gry-brn gry, med lt gry,arg,lr aren,com carb spks & flks,tr carb COAL frags,v sft-sft,amorph-sbfiss.

Survey @ 2844.3m: 19.56° 181.1A2

SANDSTONE:offwh,trnsi,pl gry,vf-f,mod-v crs lse,pr srt,sbrnd, mod stng dol cmt,off wh arg-lt gry slty mtx,carb spks,mnr pyr, mod hd-fri aggs,gen lse, ti vis & fr inf por,no fluor.

SILTSTONE:brn blk-brn gry, arg,tr vf aren i/p,grd to vf SST i/p,carb i/p,com carb spks & lams,v sft-sft,mod hd vf SST i/p,amorph-sbfiss.

SANDSTONE:trnsi,off wh,v lt gry,vf-med,tr crs-v crs,mod srt,sbrnd,wh arg-lt gry slty mtx, gen lse,tr pyr cmt,mnr carb spks, tr pyr,pr inf por,lse,no fluor.

Survey @ 2872.4m: 24.39° 182.4A2

SILTSTONE:brn blk-brn gry,lt brn gry i/p,arg,tr vf aren i/p,grd to vf SST i/p,carb i/p,com carb spks & lams,v sft-sft,mod hd vf SST i/p,amorph-sbfiss.

SANDSTONE:clr-opq,lt gry-med gry,vf-med,tr crs,mod pr srt,pred sbrnd-com sbang,wk sil cmt,tr pyr cmt,tr gry slty mtx,wh arg mtx, lse,rr fri,pr inf por,v pr vis por, no fluor.

SILTSTONE:lt brn gry-brn gry,lt gry,gry blk,arg,mnr vf aren & grd to vf slty SST i/p,carb i/p,occ-loc com carb spks & flks,v sft-sft,tr mod hd,amorph-sbfiss.

Survey @ 2901.5m: 28.38° 180.3A2

COAL:blk-brn blk,pred dll,com ea brit,tr frm,blky-sbbiky,ang-unevfn.

SANDSTONE:clr-opq,lt gry-gry vf-med,tr v crs,mod srt,pred sbrnd-com sbang,wk sil cmt, tr gry slty mtx,lse,rr fri,pr inf por, v pr vis por,no fluor.

SILTSTONE:lt brn gry-brn gry,lt gry,gry blk,arg,tr vf aren,carb i/p,grd to carb SLTST,occ-loc com carb spks & flks,v sft-sft,amorph-sbfiss.

Survey @ 2930.7m: 28.88° 180.3A2

SANDSTONE:clr-opq,mnr off wh, f-v crs,pr srt,sbrnd-sbang,wk sil cmt,tr wh slty mtx,rr pyr mtx,lse, rr fri,pr inf por,v pr vis por,no fluor.

SILTSTONE:lt brn gry-brn gry,lt gry,arg,mnr aren,tr pyr nod,tr carb spks,v sft-disp,tr hd, amorph,tr sbbiky.

SANDSTONE:clr-opq,mnr off wh, f-v crs,pr srt,sbrnd-sbang,wk sil cmt,tr wh slty mtx,lse,rr fri,pr inf por,v pr vis por,no fluor.

9.625" CASING SET @ 2945mMDRF

Rmf @ 2956m:0.12 ohm @ 75°F

SLIDING:
2837m-2864m

MW 10.0
FV 63
PV/YP 48/47
EGD 14.3
Gel 14/21/26
WL 4.5
Sol 10
pH 8.2
Ck 1/1
Cl 39K

SLIDING:
2866m-2892m

WOB: 30-45 kips
RPM: 15-200 (Surf+MM)
SPP: 3675-3895 psi
FLW: 880-895 gpm

SLIDING:
2895m-2925m

05-09-05